

PV2R-1,2,3 series

Single vane pump

R1 - 6.....31cc/rev

R2 - 26.....75cc/rev

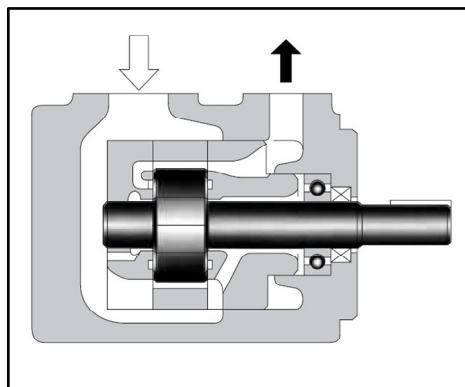
R3 - 52.....153cc/rev



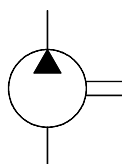
Max. Pressure up to 210 bar

Introduction	Contents																
<p>PV2R series high pressure vane pump with lower noise are the newly developed products with the integration of the advantages of similar products in recent years.</p> <p>With the features of rational structure, high performance, high efficiency, lower noise, small pulsation, strong reliability etc.</p> <p>The pumps provide extreme convenience for users and meet the substitution requirements for similar products with full specifications.</p> <p>National and international standard mounting dimensions, as well as derivative series mounting dimensions, making the pumps widely applied in the fields of machine tool industry, plastic machinery, forging machinery, engineering machinery, transportation machinery etc.</p> <p>The main internal spare parts of the pump are built in as cartridge, therefore the replacement can be easily done by simply changing the cartridge.</p>	<table><tr><td>Introduction</td><td>1</td></tr><tr><td>Graphic Symbol and internal structure</td><td>1</td></tr><tr><td>Model description</td><td>2</td></tr><tr><td>Technical Data</td><td>2-3</td></tr><tr><td>Installation Dimensions:</td><td></td></tr><tr><td>PV2R1 - * - F - 1 - RAA</td><td>3</td></tr><tr><td>PV2R2 - * - F - 1 - RAA</td><td>4</td></tr><tr><td>PV2R3 - * - F - 1 - RAA</td><td>5</td></tr></table>	Introduction	1	Graphic Symbol and internal structure	1	Model description	2	Technical Data	2-3	Installation Dimensions:		PV2R1 - * - F - 1 - RAA	3	PV2R2 - * - F - 1 - RAA	4	PV2R3 - * - F - 1 - RAA	5
Introduction	1																
Graphic Symbol and internal structure	1																
Model description	2																
Technical Data	2-3																
Installation Dimensions:																	
PV2R1 - * - F - 1 - RAA	3																
PV2R2 - * - F - 1 - RAA	4																
PV2R3 - * - F - 1 - RAA	5																

Internal structure and graphical symbol



Graphic Symbol



Model description

PV2R1	1	- *	- F	- 1	- R	- A	- A
Vane Pumps codes	Modes of subsidiary series	Nominal Displacement	Mounting type	Shaft extension	Direction of rotation	Outlet position	Inlet position
PV2R1		6, 8, 10, 12, 14, 17, 19, 23, 25, 28, 31		1. Major shaft standard 2. Minor shaft	(from shaft end) R : Clockwise direction (Right rotation standard) L : Counter-clockwise direction (Left rotation)	(from shaft end) A : Upper (Standard) R, B, L (Outlet Port A is set as upper)	(from shaft end) A : Upper (Standard) B : Bottom R : Right L : Left
PV2R2		26, 33, 41, 47, 53, 59, 65, 75	F : Flange mounting				
PV2R3		52, 60, 66, 76, 85, 94, 116, 125, 136, 153					

Technical data

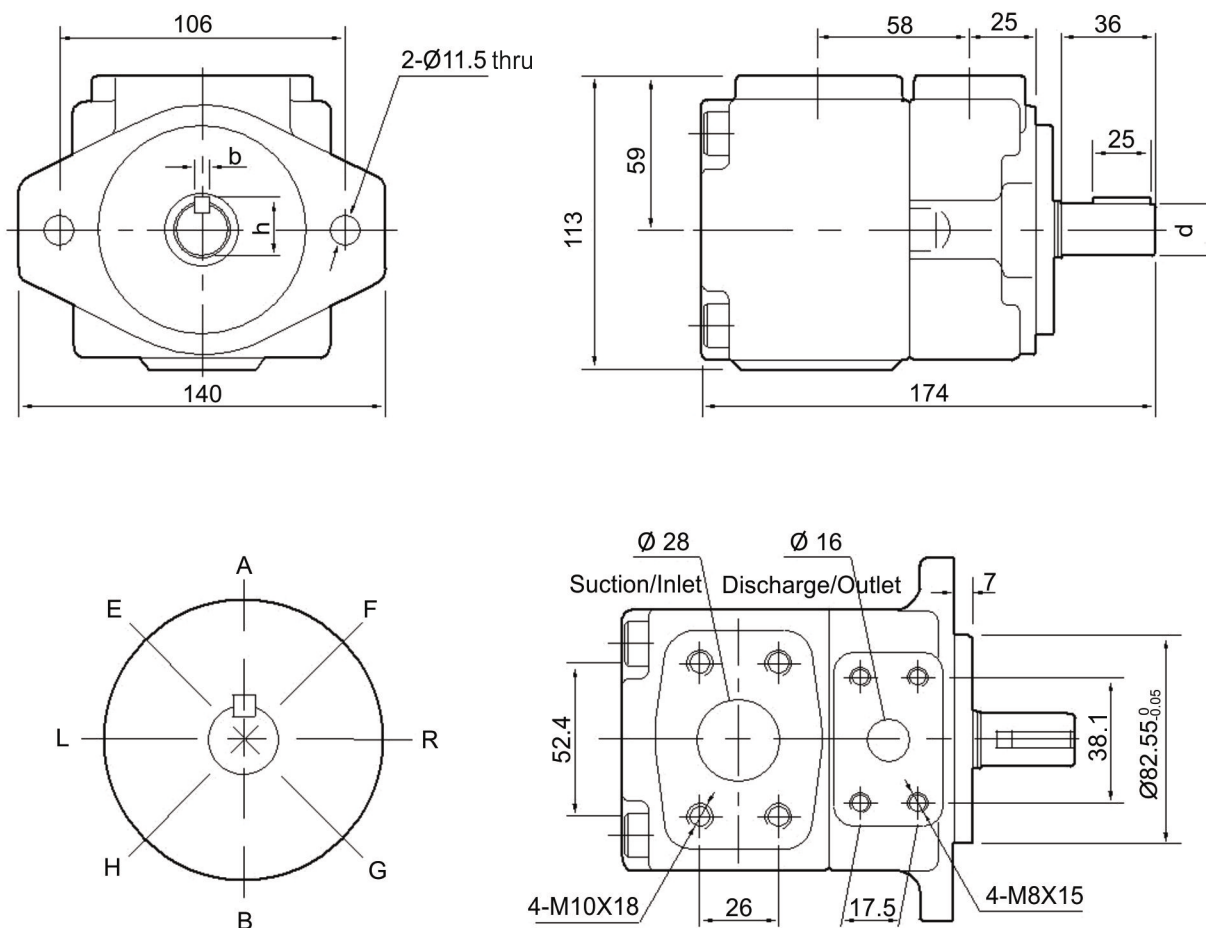
Model	Theoretical Displacement (mLr)	Max. Operating Pressure Kg/cm ²					Shaft driving speed (r/min.)		Weight (kg)
		Petroleum based Oil			Water-based synthetic hydraulic fluid		Max.	Min.	
		Particular pressure Oil	Anti-wear Oil	Common Oil	Anti-wear water-glyco	Sul phosuccinic ester fatty of acid			
PV2R1-6	6.1	210	175	150	150	160	1800 (1200)	750	8
PV2R1-8	8.1								
PV2R1-10	10.2								
PV2R1-12	12.3								
PV2R1-14	14.0								
PV2R1-17	16.3								
PV2R1-19	18.3								
PV2R1-23	22.5								
PV2R1-25	25.1								
PV2R1-28	27.6								
PV2R1-31	30.6								
PV2R2-26	25.4	210	175	140	160	140	1800 (1200)	600	16
PV2R2-33	32.2								
PV2R2-41	40.5								
PV2R2-47	46.2								
PV2R2-53	52.3								
PV2R2-59	58.2								
PV2R2-65	64.1								
PV2R2-75	74.5								
PV2R3-52	51.5	210	175	140	160	140	1800 (1200)	500	32
PV2R3-60	62.9								
PV2R3-65	67.0								
PV2R3-76	79.2								
PV2R3-85	84.5								
PV2R3-94	93.8								
PV2R3-116	113.2	175	160	140	140	1200		#34	
PV2R3-125	122.8								
PV2R3-136	135.8								
PV2R3-153	152.8								

Technical data

- Note :**
1. The rotation speed shall not be less than 1450r/min for the pumps with the nominal displacement of 6mL/r or 8mL/r working under the pressure exceeding 16Mpa.
 2. The highest rotation speed shall be limited within 1200r/min while applying with water-based synthetic hydraulic fluids.
 3. It is recommended to work with rotation speed of 1000r/min and max. pressure of 12-14Mpa on the occasion/ condition of where lower noise is strictly required.
 4. Those pumps with the marks*belongs to the extension specification of PV2R2-W group. Those pumps with the marks # belong to the extension specification of PV2R3-Q group. These two groups pump casing are 10mm longer than usual specification for special order.
 5. The approximate calculation formula for driving power is as follows : the displacement of pump(mL/r) X the rotation speed of motor (r/min) X the working pressure (Mpa) 49000. The unit for the final calculation result is KW.

Installation dimensions

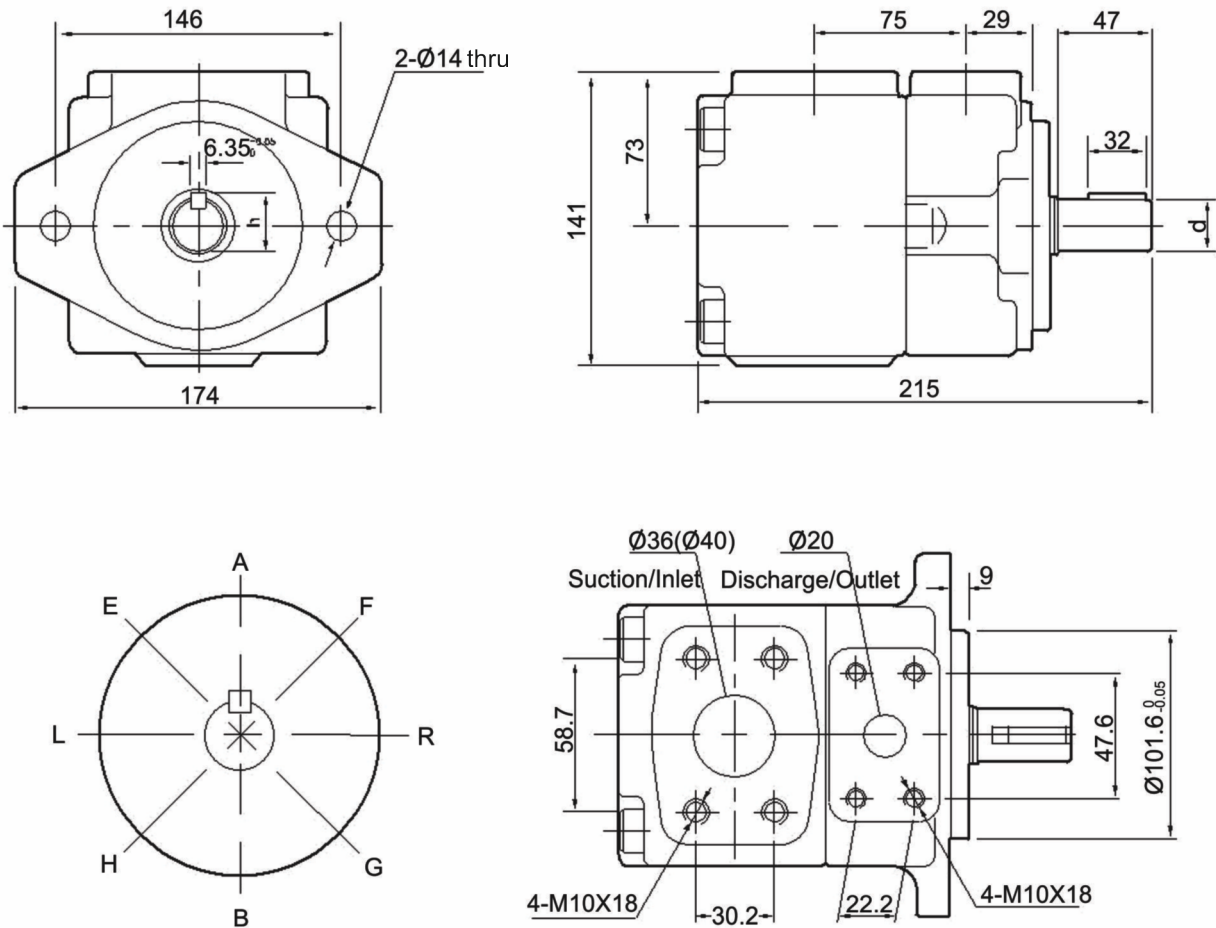
Flange Mounting : PV2R1 - * - F - 1 - RAA



Shaft extension	d	b	h	Remarks
1	Ø 19.05 ⁰ _{-0.03}	4.75 ^{+0.03} ₀	21.24 ⁰ _{-0.16}	Major shaft
2	Ø 15.88 ⁰ _{-0.03}	3.97 ^{+0.03} ₀	17.68 ⁰ _{-0.16}	Minor shaft

Installation dimensions

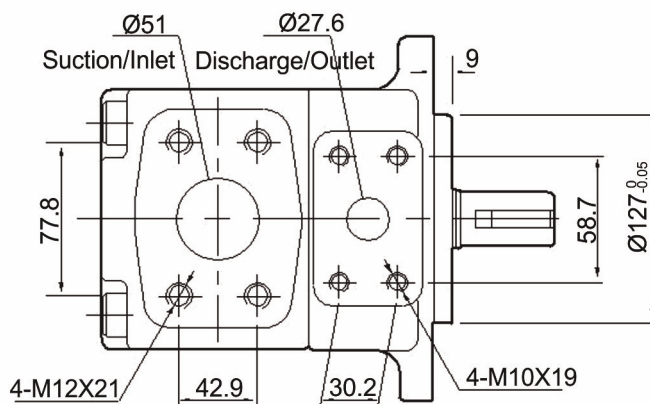
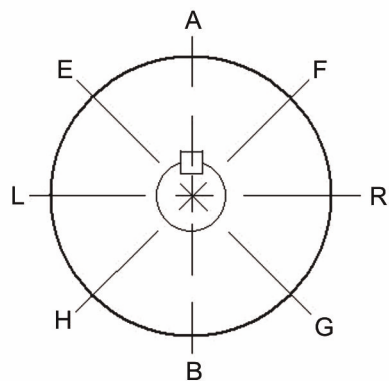
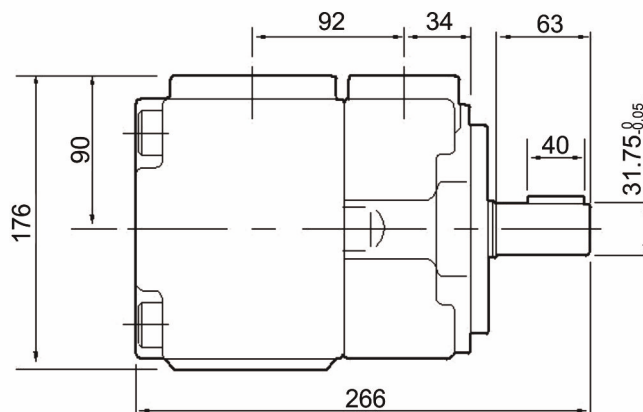
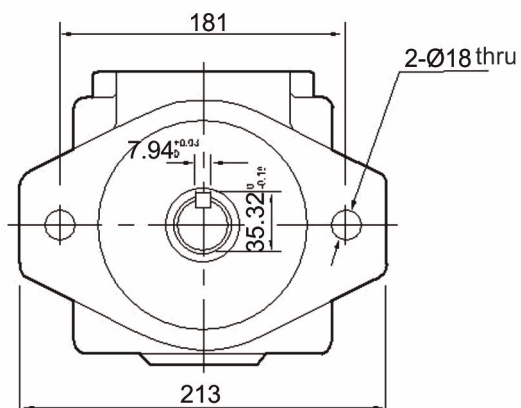
Flange Mounting : PV2R2 - * - F - 1 - RAA

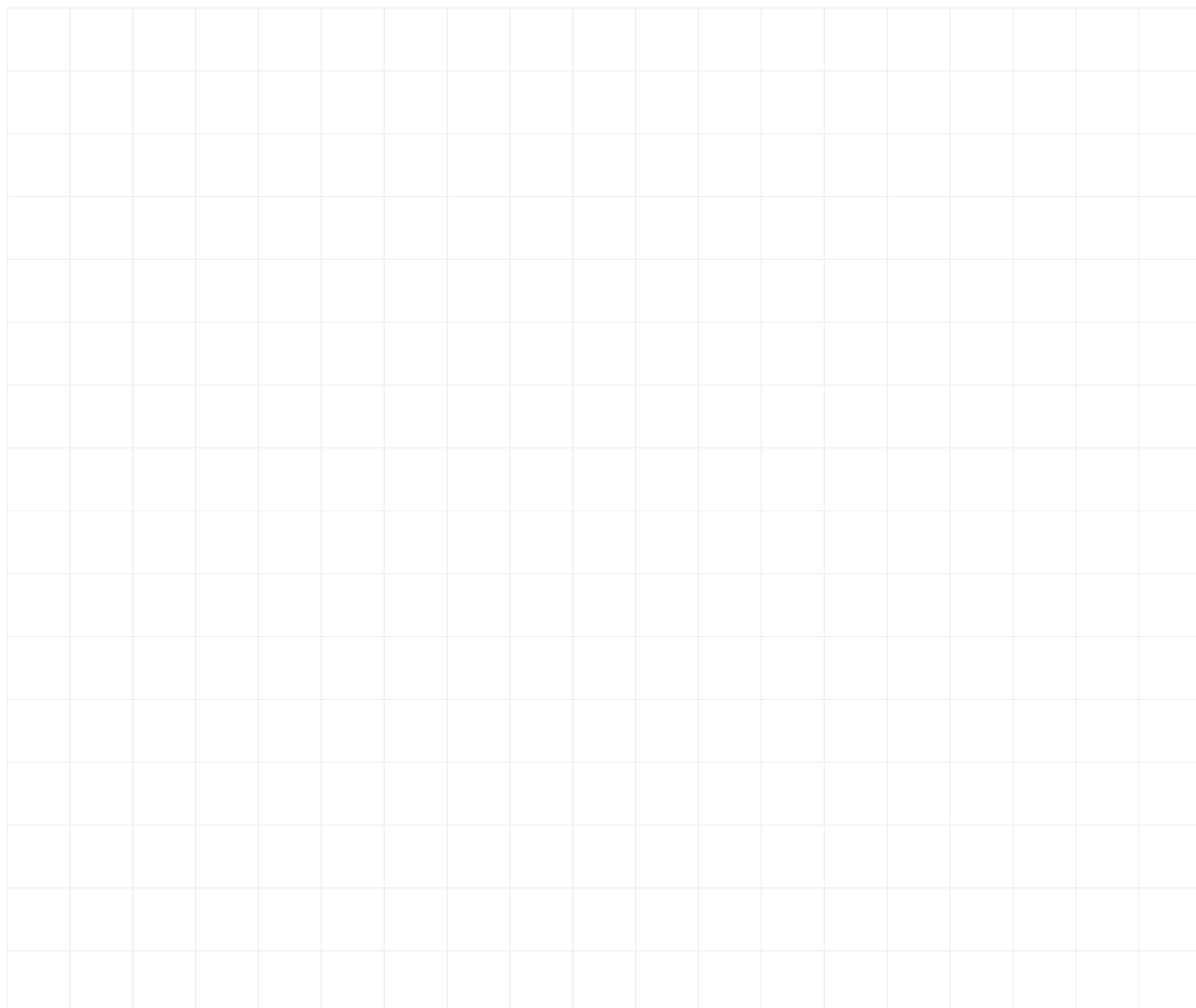


Shaft extension	d	h	Remarks
1	Ø 25.4 $\begin{smallmatrix} 0 \\ -0.05 \end{smallmatrix}$	28.18 $\begin{smallmatrix} 0 \\ -0.18 \end{smallmatrix}$	Major shaft
2	Ø 22.23 $\begin{smallmatrix} 0 \\ -0.03 \end{smallmatrix}$	25.01 $\begin{smallmatrix} 0 \\ -0.18 \end{smallmatrix}$	Minor shaft

Installation dimensions

Flange mounting : PV2R3 - * - F - 1 - RAA





The specified data is for product description purposes only and may not be deemed to be guaranteed unless expressly confirmed in the contract.



THM

THM Huade Hydraulics (P) Ltd

F-127, Focal Point, Phase VIII

Ludhaiana-141010, India

Phone: 0091+161+2672777, Fax: 0091+161+2672778

www.thmhuade.com

info@thmhuade.com, sales@thmhuade.com